

## 2025 UAE Flag Day And National Day Celebration At Latifa Towers



### EMPLOYEE OF THE MONTH OCTOBER 2025



**MR JAYARAJAN VALAMARI MEETHAL**  
FACILITIES DEPARTMENT - PAINTER

# RKM NEWSLETTER

15.12.2025 | Thursday

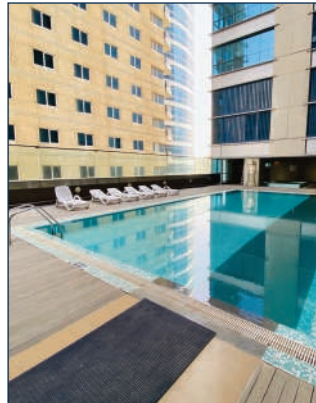
f @ in www.rkmdubai.com

## Luxury Villas In Al Rashidiya, Dubai - Residential Development By RKM



One of our flagship residential projects – a collection of 8 luxury villas located in Al Rashidiya, right in the heart of Dubai. Each villa is precisely designed and thoughtfully laid out to cater to both comfort and elegance. Each villas features 5 spacious bedrooms, Majlis with dining area, maids room, covered parking with remote access, Smart Intercom System with Mobile Notification for Visitor Alerts. The Villas exclusively provides various amenities like fully equipped gym, swimming pool, children play area, CCTV Surveillance and other safety measures, Professionally Designed Landscaping. The location for these villas is just minutes away from the Dubai International airport, Rashidiya metro Station, Rashidiya park, Cooperative society and major Hyper markets. The community is easily accessible via Sheikh Mohammed Bin Zayed Road, Garhoud Road, Dubai Airport Road, and Business Bay Crossing, making it highly convenient for residents commuting across the city.

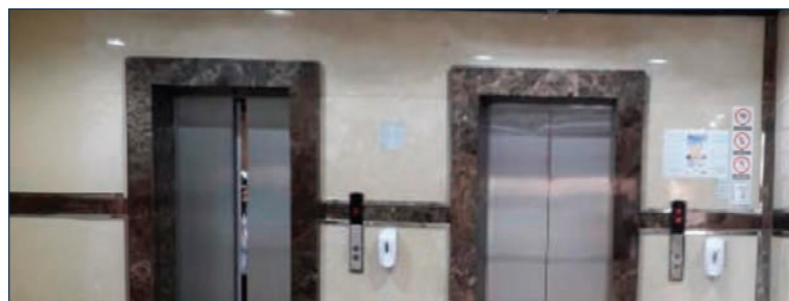
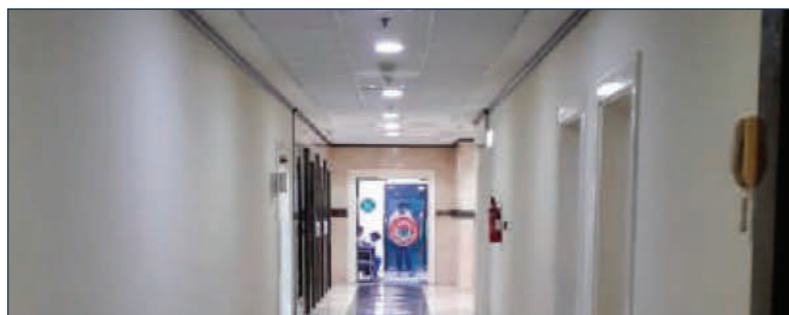
# Latifa Towers



Spacious 2 & 3 Bedroom Apartments for Rent at Latifa Towers - Sheikh Zayed Road Modern, well-maintained 2 and 3 bedroom apartments available to rent in a prime Dubai location. Enjoy panoramic city views, spacious layouts, 24/7 security, covered parking, well equipped gym and swimming pool, Built-in wardrobes, and access to nearby metro stations, malls, and business hubs. Located directly on Sheikh Zayed Road - minutes from Downtown Dubai, Business Bay, and Dubai International Airport. Limited units available - book your viewing today with RKM management (Call or Whatsapp - +971- 565923929)!

## RKM Commercial Building

RKM Commercial Building is strategically located on Al Ittihad road, Hor Al Anz East area next to Al Qiyadah metro station and well connected by RTA Bus Station this place is a good location to rent an office space. It is walkable distance to the metro and has an easy access to abundant retail facilities and Discount Centres, Restaurants, Pharmacies and hotels. Great location for commercial offices, centrally located and good size units for small to large company needs. The building provides facilities like Free Chiller, CCTV Monitoring, Designated Parking, 24 Hours Security to the tenants.



## Daily, weekly And Monthly Maintenance Works In Latifa Towers

We would like to inform you that the Building Management is continuously working to improve cleanliness and operational efficiency throughout the building. Our cleaning team undergoes training to stay updated on best practices. We have increased the frequency of cleaning in high-traffic and high-touch areas and are using eco-friendly, effective cleaning products. Supervisors are closely monitoring performance to ensure high standards are consistently met.



## Celebrating Other Occasions At Latifa Towers

